



COSTA NOVA

PORTUGAL



NEW INTRODUCTIONS 2024

Available in White and Turquoise

ALENTEJO



Round plate
30 cm | 12"
○ TP301-WHT
● TP301-TRQ
D29.8 H2.9 cm
[6]



Appetizer plate 14
○ TP142-WHT
● TP142-TRQ
D13.5 H3.5 cm
[6]



Candle holder 4
○ TD121-WHT
● TD121-TRQ
D11.8 H4 cm
[2]

The Alentejo collection celebrates the peaceful feeling of the southern Portuguese landscape, filled with vast plains and olive trees. With gently flowing edges and soft glazes seamlessly mixed and matched, both dinnerware and oven-to-table accessories add warmth to any table, whether indoors or out.

ÂMBAR

• NEW COLOR - SAGE GREEN •



Oval plate/platter
37 cm | 15"
1ABP371E-SAG
36.9 x 20.9 H1.8 cm
14 1/2" x 8 1/4" H3/4"
[6]



3-Section rect. tray
28 cm | 11"
1ABD281E-SAG
28 x 9.9 H2.7 cm
11" x 3 7/8" H1 1/8"
[6]



2-Section rect. tray
19 cm | 8"
1ABD191E-SAG
19.1 x 10 H2.8 cm
7 1/2" x 3 7/8" H1 1/8"
[6]



2-Section rect. tray
28 cm | 11"
○ 1ABD191E-WHI
● 1ABD191E-CAR
19.1 x 10 H2.8 cm
7 1/2" x 3 7/8" H1 1/8"
[6]



APARTE



Shell footed bowl 20
MRS201-WHI

D19.8 H11.7 cm | 154.3 cl
[6]



Urchin bowl 14
MRS143-WHI

D14.4 H6 cm | 43.5 cl
[6]

With organic shapes inspired by Nature, the Aparte collection was designed to complement all other Costa Nova collections. It features an appealing set of dining and serving pieces to combine with any tableware for informal and unexpected effects.

ARENITO



Available in Champagne yellow, Aqua, Mauve rose, Sage green, Olive green and Charcoal grey



Set 6 poke bowls
multicolor
2RTSS02-MLT



Set 6 latte bowls
multicolor
2LNSS01-MLT



Gift box 8 lungo cups
multicolor
2LNCS02-MLT



Gift box 8 espresso cups
multicolor
2LNCS01-MLT



Poke bowl 19
2RTS192-PNK



Latte bowl 16
2LNS161-PNK



Lungo cup 20 cl
2LNC092-PNK



Espresso cup 7 cl
2LNC062-PNK



Poke bowl 19
2RTS192-CHM



Latte bowl 16
2LNS161-CHM



Lungo cup 20 cl
2LNC092-CHM



Espresso cup 7 cl
2LNC062-CHM



Poke bowl 19
2RTS192-GRN



Latte bowl 16
2LNS161-GRN



Lungo cup 20 cl
2LNC092-GRN



Espresso cup 7 cl
2LNC062-GRN



Poke bowl 19
2RTS192-AQU



Latte bowl 16
2LNS161-AQU



Lungo cup 20 cl
2LNC092-AQU



Espresso cup 7 cl
2LNC062-AQU



Poke bowl 19
2RTS192-OLV



Latte bowl 16
2LNS161-OLV



Lungo cup 20 cl
2LNC092-OLV



Espresso cup 7 cl
2LNC062-OLV



Poke bowl 19
2RTS192-CHR



Latte bowl 16
2LNS161-CHR



Lungo cup 20 cl
2LNC092-CHR



Espresso cup 7 cl
2LNC062-CHR

Gift box 8 espresso / lungo cups

Includes 2 espresso / lungo cup in champagne yellow and sage green and 1 espresso/lungo cup in acqua, mauve rose, olive green and charcoal grey.

BRISA



Deep oval bowl 10

- GOS101-SAL
- GOS101-RIA

9.9 x 7.4 H5 cm | 13 cl
[6]



Serving bowl 28

- LNS281-SAL
- LNS281-RIA

D27.7 H11.6 cm | 351.5 cl
[1]



Urchin bowl 18

- MRS181-RIA

D18.4 H7.2 cm | 95 cl
[6]

The warm breeze that blows from the east and cascades along the Algarve coast with fruity aromas and the flavors of Ria Formosa was the inspiration for this collection. The blended white and blue glazes and organic shapes transport us to the intricate landscape of lagoons, canals, salt works, and sandy beaches stretching across deserted islands. This collection adds light to every gathering and turns any table into a memorable experience.

ELEMENTS



LAMEGO



Set 4 salad/dessert plates 22 COPS03-LMA | D21.6 H2.8 cm [1]
Set 4 appetizer plates 17 SLPS03-LMA | D16.6 H1.5 cm [1]

ALGARVE



Set 4 salad/dessert plates 22 COPS03-ALA | D21.6 H2.8 cm [1]
Set 4 appetizer plates 17 SLPS03-ALA | D16.6 H1.5 cm [1]

An eclectic range of accent plates and mugs meant for layering with other neutral tableware collections. Whether you choose to playfully layer plain dinner plates or use them for tapas and small appetizers, Elements is perfect for everyday meals or tapas style dining with friends. Unique and inspiring patterns to create a completely new look for different occasions.

GRESPRESSO ECOGRES



Made of recycled stoneware, Grespresso Ecogres presents itself as a sensorial and sustainable collection of espresso cups. The collection presents a distinctive design with contrasting glazes and textures — a white, glossy surface on the interior and a dark grey, matte surface on the exterior.

Grespresso Ecogres Gift Boxes



Gift box 8 espresso cups
White Vietnam
1EXCS01E-WVT



Gift box 8 espresso cups
White Kenya
1EXCS02E-WKN



Gift box 8 espresso cups
White Colombia
1EXCS03E-WCL



White Vietnam
Espresso cup 7 cl
1EXC061E-WVT



White Kenya
Espresso cup 7 cl
1EXC062E-WKN



White Colombia
Espresso cup 7 cl
1EXC063E-WCL



Ecogres, white glossy glaze (interior), matte glaze (exterior). Handcrafted pieces, available in four different patterns.
Ecogres, white glossy glaze. Handcrafted pieces, available in three different patterns.

GRESPRESSO

NATURE



Made of recycled stoneware, Grespresso Ecogres presents itself as a sensorial and sustainable collection of espresso cups. The collection presents a distinctive design with contrasting glazes and textures — a white, glossy surface on the interior and a dark grey, matte surface on the exterior.

Grespresso Nature Gift Boxes



Gift box 8 espresso cups
Multicolor
LSCS14-MLT



Gift box 8 lungo cups
Multicolor
LSCS15-MLT

Grespresso Nature Espresso and Lungo Cups



Slate-White
Espresso cup 7 cl
1LSC062-WSL



Natural-White
Espresso cup 7 cl
LSC062-WNT



Sand-White
Espresso cup 7 cl
2LSC062-WSN

Lungo cup 19 cl
1LSC081-WSL

Lungo cup 19 cl
LSC081-WNT

Lungo cup 19 cl
2LSC081-WSN



Gift box 8 espresso/lungo cups

Includes 3 espresso/lungo cups in slate-white and sand-white and 2 espresso/lungo cups in natural-white.

Ecogres, white glossy glaze (interior and exterior), matte glaze (exterior). Handcrafted pieces, available in three different colors.

MADEIRA



The Madeira collection takes stoneware to a new level of design. Inspired by nature, it features three vivid colors and a unique “crackled” surface similar to the effect of dappled lighting.

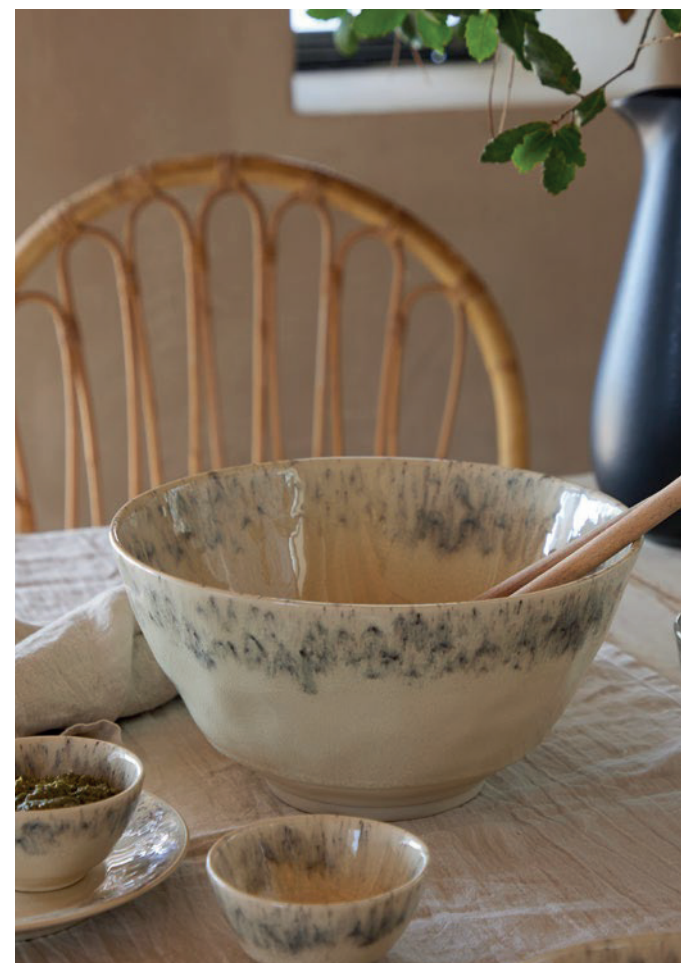
PHOTOGRAPHED IN **MELIDES, PORTUGAL**







Madeira, with its
unique finish,
is the ideal choice



COSTA NOVA — STONEWARE — MADEIRA

New color Cream



Dinner plate 28
● BOP281-CRM



Salad/dessert plate 22
● BOP221-CRM



Appetizer plate 16
● BOP162-CRM



Soup/pasta bowl 19
● DES192-CRM



Soup/cereal bowl 14
● DES141-CRM



Fruit bowl 12
● DES121-CRM



Round ramekin 9
● DEN091-CRM



Mug 44 cl
● DEC144-CRM



Serving bowl 24
● DES241-CRM



Rect. tray 27
● BOR271-CRM

Fine stoneware, glossy craquelée glaze. Made in Portugal.



MARRAKESH



Designed by the French floral artis Christian Tortu, the Marrakesh collection harmoniously blends sustainable craftsmanship, nature's essence, and Moroccan mystique.

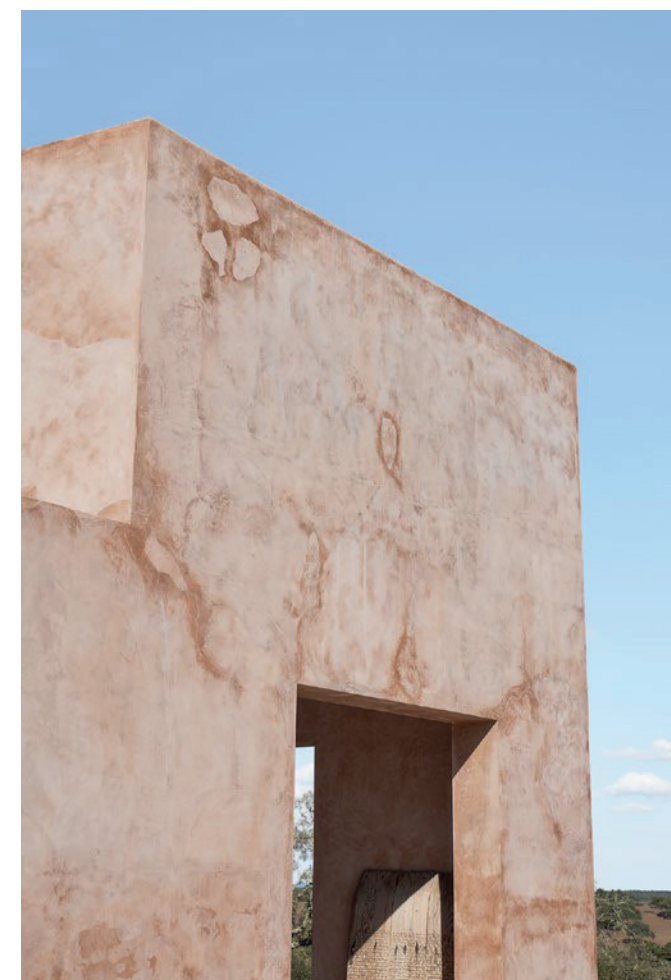
PHOTOGRAPHED IN **CASA AZUL, MELIDES**





Beyond its harmoniously beautiful design, what truly makes Marrakesh remarkable is its commitment to sustainability. Crafted by skilled artisans from Ecogres, Costa Nova's innovative recycled clay, each piece is a fusion of artistic excellence and eco-consciousness.





COSTA NOVA — STONEWARE — MARRAKESH

Available in Sable Blanc, Eucalyptus, Cannelle, Cumin and Ciel



Dinner plate 28
○ 2KEP281E-SBL



Salad/dessert plate 22
○ 2KEP221E-SBL



Appetizer plate 19
○ 2KEP191E-SBL



Serving bowl 26
○ 2VGS261-SBL



Cov. casserole 15
○ 2VGH151-SBL



Cov. casserole 12
○ 2VGH121-SBL



Pitcher 237 cl
○ 2NAZ261-SBL



Soup/pasta plate 23
○ 2IHP232-SBL



Soup/pasta plate 22
○ 2VGP221-SBL



Soup/cereal bowl 15
○ 2VGS151-SBL



Fruit bowl 12
○ 2VGS121-SBL



Dinner plate 28
● 2KEP281E-EUC



Salad/dessert plate 22
● 2KEP221E-EUC



Appetizer plate 19
● 2KEP191E-EUC



Dip bowl 10
○ 2VGN101-SBL



Dip dish 7
○ 2COD071-SBL



Soup/pasta plate 23
● 2IHP232-EUC



Soup/cereal bowl 15
● 2VGS151-EUC



Fruit bowl 12
● 2VGS121-EUC



Dip bowl 10
● 2VGN101-EUC



Mug 44 cl
○ 2BLC141-SBL



Cup 17 cl
○ 2BLC091-SBL



Cup 8 cl
○ 2BLC071-SBL



Banana leaf 53
● 2ELA531E-EUC



Monstera leaf 27
● 2ELA271E-EUC

COSTA NOVA — STONEWARE — MARRAKESH

Available in Sable Blanc, Eucalyptus, Cannelle, Cumin and Ciel



Salad/dessert plate 22
● 2KEP221E-CAN



Appetizer plate 19
● 2KEP191E-CAN



Soup/cereal bowl 15
● 2VGS151-CAN



Fruit bowl 12
● 2VGS121-CAN



Salad/dessert plate 22
● 2KEP221E-CIE



Appetizer plate 19
● 2KEP191E-CIE



Soup/cereal bowl 15
● 2VGS151-CIE



Fruit bowl 12
● 2VGS121-CIE



Dip bowl 10
● 2VGN101-CAN



Cov. casserole 15
● 2VGH151-CAN



Cov. casserole 12
● 2VGH121-CAN



Dip bowl 10
● 2VGN101-CIE



Salad/dessert plate 22
● 2KEP221E-CMN



Appetizer plate 19
● 2KEP191E-CMN



Soup/cereal bowl 15
● 2VGS151-CMN



Fruit bowl 12
● 2VGS121-CMN



2 Salad plates holder
O30398-GLD



3 Appetizer plates holder
O30397-GLD



2 Appetizer plates holder
O30396-GLD



Low metallic riser 28
O30399-GLD



Dip bowl 10
● 2VGN101-CMN

NOVA



Appetizer dish 14
○ NOP141-WHE

D13.5 H3.6 cm
[6]



Divided dish 20
○ NOR201-WHE

19.9 x 10 H3 cm
[4]

Inspired by Nature’s organic shapes of the natural world and the cycle of life, Nova seeks to capture movement in fine stoneware. The pieces are inspired by seashells and tree bark and like these objects found in nature, they possess the ability to change their appearance depending on the time of day and the angle of the light.

PLANO



**Cork/recycled EVA
round coaster 10**
O30394-WBK

D10 H0.4 cm
[6]



**Cork/recycled EVA
round coaster 10**
O30395-IND

D10 H0.4 cm
[6]



Sourced from the surplus of our own factory production, Plano is the first recycled collection by Costa Nova. All Costa Nova collections are produced with respect for nature — reusable and recyclable. Plano goes even further ahead, telling a unique story of how tableware can be made of recycled materials, completely eco-friendly, while remaining beautiful and functional at the same time.

Recycled stoneware, glossy glaze (interior), unglazed (exterior). Cork/recycled EVA (placemats and coasters). Oak wood (boards). Steel (holder and stand).
Made in Portugal.

REDONDA



Appetizer plate 17

- RNP172-WHI ● RNP172-GRN
● RNP172-BRN

D16.6 H1.5 cm
[6]

Designed by Torres Euracini, Redonda is a complete tableware collection of shapes and colors made of the best and most resistant stoneware, cylindric stackable pieces suitable for all table settings. The inspiration comes from the modern cosmopolitan culture, translated in pure and minimalist forms, versatility, and refined beauty. A collection that breathes the contemporaneity of the senses.

RODA



“Bring everyone together at the table... in a circle of friends, we awaken the delight of meeting flavors, experiences and stories of companionship made of emotions and shared memories. Time well spent with moments of pure happiness and culinary delights... the next dish follows; the next story follows.”

It was this simple, yet significant vision that inspired Torres Euracini to create Roda.

• NEW COLOR - BLACK •



**Round coupe plate
31 cm | 12"**
RTP312-BLK
D31.3 H3.3 cm
D12 3/8" H1 1/4"
[6]



**Round coupe plate
28 cm | 11"**
RTP282-BLK
D27.5 H3.2 cm
D10 7/8" H1 1/4"
[6]



**Round coupe plate
22 cm | 9"**
RTP222-BLK
D21.9 H2.5 cm
D8 5/8" H1"
[6]



**Round plate
16 cm | 6"**
RTP161-BLK
D15.6 H1.8 cm
D6 1/8" H3/4"
[6]



**Pillow plate
16 cm | 6"**
RTP163-BL
D15.6 H2.6 cm
D6 1/8" H1"
[6]



**Deep round plate
22 cm | 9"**
RTP225-BLK
D21.5 H5 cm | 96.1 cl
D8 1/2" H2" | 32 1/2 fl oz
[6]



**Bowl
16 cm | 6"**
RTS161-BLK
D15.6 H8 cm | 82.4 cl
D6 1/8" H3 1/8" | 27 7/8 fl oz
[6]



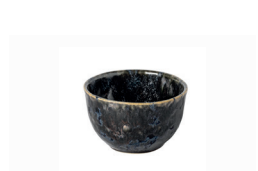
**Bowl
13 cm | 5"**
RTS131-BLK
D12.8 H7.1 cm | 43.4 cl
D5" H2 3/4" | 14 5/8 fl oz
[6]



**Bowl
10 cm | 4"**
RTN101-BLK
D9.7 H6 cm | 19.1 cl
D3 7/8" H2 3/8" | 6 1/2 fl oz
[6]



**Bowl
16 cm | 6"**
● RTS161-IRS
D15.6 H8 cm | 82.4 cl
D6 1/8" H3 1/8" | 27 7/8 fl oz
[6]



**Bowl
10 cm | 4"**
● RTN101-IRS
D9.7 H6 cm | 19.1 cl
D3 7/8" H2 3/8" | 6 1/2 fl oz
[6]

STACKED ORGANIC







Dinner plate 27
○ 1COP271E-SLT



Salad/dessert plate 22
○ 1COP211E-SLT



Oval plate 20
○ 1GOP201E-SLT



Pasta bowl 23
○ 1GOP231E-SLT



Soup/cereal bowl 15
○ 1IOS153E-SLT



Mug 36 cl
○ 1GOC131-SLT



Oval platter 45
○ 1GOA451E-SLT



Serving bowl 37
○ 1GOS371E-SLT



Footed plate 27
○ 1LOP275E-SLT



Oval baker 30
○ 1LSA301E-SLT



Oval baker 26
○ 1LSA251E-SLT



Pie dish 27
○ 1ET271E-SLT



Bird 9
○ 1LSD091-SLT



Dinner plate 27
● 1COP271E-CRM



Salad/dessert plate 22
● 1COP211E-CRM



Oval plate 20
● 1GOP201E-CRM



Pasta bowl 23
● 1GOP231E-CRM



Soup/cereal bowl 15
● 1IOS153-CRM



Mug 36 cl
● 1GOC131-CRM



Oval platter 45
● 1GOA451E-CRM



Serving bowl 37
● 1GOS371E-CRM



Footed plate 27
● 1LOP275E-CRM



Pie dish 27
● 1ET271E-CRM



Bird 9
● 1LSD091-CRM



Dinner plate 27
● 1COP271E-PRT



Salad/dessert plate 22
● 1COP211E-PRT



Oval plate 20
● 1GOP201E-PRT



Pasta bowl 23
● 1GOP231E-PRT



Soup/cereal bowl 15
● 1IOS153-PRT



Mug 36 cl
● 1GOC131-PRT



Oval platter 45
● 1GOA451E-PRT



Serving bowl 37
● 1GOS371E-PRT



Footed plate 27
● 1LOP275E-PRT



Pie dish 27
● 1ET271E-PRT



Bird 9
● 1LSD091-PRT



Dinner plate 27
● 1COP271E-SEA



Salad/dessert plate 22
● 1COP211E-SEA



Oval plate 20
● 1GOP201E-SEA



Pasta bowl 23
● 1GOP231E-SEA



Soup/cereal bowl 15
● 1IOS153-SEA



Mug 36 cl
● 1GOC131-SEA



Oval platter 45
● 1GOA451E-SEA



Serving bowl 37
● 1GOS371E-SEA



Pie dish 27
● 1ET271E-SEA



Bird 9
● 1LSD091-SEA

COSTA NOVA — STONEWARE — STACKED ORGANIC

Available in Salt, Cremini, Port, Deep Sea and Sky



Dinner plate 27
● 1COP271E-SKY



Salad/dessert plate 22
● 1COP211E-SKY



Oval plate 20
● 1GOP201E-SKY



Pasta bowl 23
● 1GOP231E-SKY



Soup/cereal bowl 15
● 1IOS153-SKY



Mug 36 cl
● 1GOC131-SKY



Oval platter 45
● 1GOA451E-SKY



Serving bowl 37
● 1GOS371E-SKY



Footed plate 27
● 1LOP275E-SKY



Pie dish 27
● 1ET271E-SKY



Bird 9
● 1LSD091-SKY

COSTA NOVA — STONEWARE — STACKED ORGANIC



PICO



Pico flatware boasts a modern design featuring a sleek black resin handle, making it the perfect choice for those who appreciate simplicity with a touch of elegance. Whether you’re hosting a formal dinner or a casual gathering, Pico complements any occasion, adding a refined and contemporary feel to your dinning experience.

Stainless steel 18/10, 8 mm, brushed finish, resin handle. Available in black. Made in Portugal.



Flatware 5 pieces
C20744-BLK

1 Table fork, knife and spoon,
1 dessert fork and spoon
[1]



Flatware 20 pieces
C20743-BLK

4 Table forks, knives and spoons,
4 dessert forks and spoons
[1]



Flatware 24 pieces
C20742-BLK

6 Table forks, knives and spoons,
6 tea spoons
[1]



Salad serving set (2p.)
C20747-BLK

1 Salad fork and spoon
[1]

MACHINE-MADE

Mouth-blown glassware with 2000 years old technique

Machine processes simulate handmade production and guarantee
high-quality lead-free crystalline glass.



ALICE



Red wine glass 48 cl
V10310-CLR



White wine glass 38 cl
V10311-CLR



Flute 26 cl
V10312-CLR



RIVIERA
DESIGNED BY CHRISTIAN TORTU



Diabolo vase soy wax
candle 19
DCV191-BSN



Footed bowl soy wax
candle 14
VES141-BTR



Footed bowl soy wax
candle 12
VES121-BTR



Chalice soy wax
candle 12
VED121-BTR

Riviera: Fine stoneware, matte glaze. Made in Portugal. **Riviera Candles:** Fine stoneware, matte glaze (exterior and interior - BSN), glossy craquelée glaze (interior - BTR). Soy wax, 10% fragrance. Made in Portugal.



BRISA



Soap/Lotion pump 11
LND131-RIA



Tumbler 9
LNC111-RIA



Soap dish 15
GOP161-RIA



Boutique tissue 15
COX151-RIA