



NORDWAYS<sup>®</sup>  
BEYOND COMFORT

UNLIMITED  
comfort at work & beyond

COLLECTION 2025

# CONTENTS

04

History

05

Business  
rationale

06

ECOVADIS  
LABEL

07

Nordways  
worldwide

08

Ambassadors

10

Customization

12

Clogs

22

Work Sneakers

32

Duty shoes

38

Kitchen Shoes

47

Boots

50

Accessories

52

Summary

53

Maintenance

54

Standards

56

Nordways  
technologies



*Nordways®: designed to  
make you love your work  
shoes every step of the way.*



# EDITORIAL

Step into the world of Nordways: Leading in Safety Footwear Excellence

At Nordways, we understand that a busy day leaves no room for discomfort or uncertainty. That's why we design work shoes that combine style, safety, and durability to support the hardworking professionals in the HoReCa and healthcare sectors.

Your profession demands your best every day, often in environments with slippery surfaces and long standing hours. For this reason, every detail of our footwear is designed to meet your needs: slip-resistant soles, breathable materials, and comfort that moves with you.

No matter how challenging your day, our models help you stay focused on what matters most: your clients, your patients, and your passion for your work. With designs that balance style and functionality, you'll find the perfect fit.

Explore our collection and experience the quality, comfort, and innovation that only Nordways can offer. Together, let's make every day a success.

The Nordways Team

Pierre-Henri FRENET  
CEO



# HISTORY

## 45 YEARS OF FRENCH EXPERTISE

Founded in 1977 in Valence city, in southern France, Nordways has been designing and manufacturing work footwear for over four decades.

With a strong heritage, deeply rooted values, impeccable ethics and a meticulous approach to our business, we take pride in offering top-quality products and efficient

logistics. Our mission is clear: to make “foot well-being” accessible to everyone. At Nordways, we don't just create work footwear. We deliver essential safety equipment, bringing together comfort and style, designed to protect and enhance professionals in the workplace and beyond!



( 1977 )

Creation of Nord'ways®

First 'Les Blancs' clogs capsule collection

( 1990 )



( 2012 )

Creation of the design LAB research & design department

The Nordways® logo evolved

( 2019 )



( 2022 )

45 years of Nordways  
Integration into the JLF Group leader in footwear accessories

New brand identity ,  
Unlimited comfort at work & beyond

( 2024 )



( 2025 )

CSR Commitment  
EcoVadis Label

# BUSINESS RATIONALE

## UNLIMITED COMFORT AT WORK & BEYOND

**“UNLIMITED”** embodies our ambition, mindset, and our drive to think outside the box. It reflects our commitment to exceeding standards and pushing boundaries in everything we do.

**“COMFORT”** is key. Our work footwear is designed for demanding jobs that require long hours on your feet, offering protection and safety without sacrificing comfort.

**“AT WORK”** represents our professional footwear, built to meet safety standards while ensuring comfort. Our designs help reduce the risk of musculoskeletal disorders (MSDs) and accidents, enhancing both performance and well-being in the workplace.

**“& BEYOND”** Designed for the workplace, our footwear offers benefits that extend beyond it. With features that relieve leg and back pain, and prevent discomfort after long hours, «Beyond» combines comfort and style, customizable to suit your needs, and ideal for wear even after work.





# ECOVADIS LABEL

## NORDWAYS PLATINUM MEDAL FOR EXCELLENCE IN CSR PERFORMANCE



NORDWAYS has been awarded the EcoVadis Platinum Medal, a distinction granted to the top 1% of companies evaluated by EcoVadis. This recognition reflects the excellence of our sustainability management system and underscores our commitment to promoting transparency across the entire value chain.

### GLOBAL SCORE



99th percentile

### ENVIRONMENT



### SOCIAL & HUMAN RIGHTS



### ETHICS



### RESPONSIBLE SOURCING



# EXPANDING HORIZONS: NORDWAYS® WORLDWIDE



Partner of the  
French Culinary Academy (USA)

The Hotel Show  
Dubai (UAE)



Nordways Thailand  
Subsidiary Thaifex  
Horeca Exhibition,  
Bangkok

# AMBASSADORS

Since 2020, Nordways has been recommended by over 250 French chefs. We've forged unique partnerships with professionals in the catering and hospitality industries, creating a community that tests our work footwear and attests to its value.



**Loi Ming Ai**  
(Co-founder of @voila-my-Malaysia)

*Such an honor to work  
together with Nordways, so  
pretty shoes, with customized  
Voila logo.*



**Julio Diaz Revuelta**  
(Corporate Pastry Chef, Lopesan Hotels Group)

*These shoes are incredible, a crazy thing the comfort...  
I can say they are the best shoes I've ever had. So  
happy with my choice. Since this morning, when I've  
been making the rounds of our hotel buffers, I can't stop  
talking to the chefs about them.*







**Wilfried Brancquart**

(Chef of French Representation for United Nations, NYC)

"Beyond comfort" - we're talking about Nordways: "behind the art" - we're talking about the artist Fabrice Leito. Proud to show you in NYC the new kitchen and safe shoes. Let's order yours, make it unique and never forget... Nordways make your life comfortable and will make your cuisine life easier, but you still have to bring "réconfort" on your plate!



**Daniele Ticione** (Chef at  
Ristorante Da Salvo\_Roma)

*They are spectacular! They are comfortable and beautiful... You feel very good in them!*



**Fabrice Guinchard and Gerard Bertholon**,  
(Chefs Cuisine Solutions)

*With Nordways shoes, always keep your feet on the ground and your head in the stars.*

# UNLIMITED CUSTOMIZATION



Discover the unique styles of our  
ambassadors on Instagram and our website.



@nordways.shoes



nordways.fr





**Imagine transforming a simple pair of sneakers into a unique work of art,** crafted just for you. With our Mael work sneakers, your vision becomes reality as our artist brings your ideas to life with exclusive custom artwork.

**Each pair is a blank canvas, ready to tell your story.** Colors, shapes, details everything is tailored to your taste, creating shoes like no other.

**Your work sneakers become more than just an accessory:** they're an expression of your creativity and individuality.





# THE CLOGS



# SILVO

## SAFETY CLOG WITH STEEL TOE CAP

- Unisex model
- 395 g (weight 1 foot)
- White, black **from 35 to 48**  
Suitable for extra-large sizes :  
from **49 to 50**

### TRADES RECOMMANDATIONS

Hygiene & Public Services,  
Food processing, Catering,  
Light Industry

### OUTER SOLE

#### NWSHARK.

Sole in injected single-density  
polyurethane. Slip-resistant,  
antistatic and resistant to oils and  
acids.

**20345:2022 SB A E FO SR**

### UPPER



Highly resistant S2 water-repellent  
microfiber. Easy care thanks to  
QWS® technology.  
Comfort padding on top of foot  
Removable, elasticated back  
strap

### INSOLE

Removable, anatomical,  
antistatic and perforated EVA..

### LINING

#### Hygi&Soft.

Breathable, very soft,  
antibacterial lining.



○ ●  
Colors :



*Non-slip clog with toe cap offering maximum  
safety for the food industry and restaurant  
professions.*



Antistatic



Energy absorbing



Hydrocarbon



Water repellent



Machine  
washable 15 min



Suitable for extra-large  
sizes T49-50



Comfort



Non-slip





# THOR

## SAFETY CLOG WITH STEEL TOE CAP

- Unisex model
- 450 g (weight 1 foot)
- From 35 to 48

### TRADES RECOMMANDATIONS

Hygiene & Public Services,  
Food processing, Catering,  
Light Industry

### OUTER SOLE

#### EASYGRIP®

Single-density flexible polyurethane  
sole. Non-slip tread heel.

### UPPER

Entirely in leather, treated with a  
protective High Protect polyurethane  
film. Comfort pad at the instep.

### INSOLE

Natural split leather on a latex foam  
layer for exceptional comfort. Good  
breathability. Good perspiration  
absorption..

### LINING

Soft, breathable leather.



Colors :



*Leather safety clog, crafted with Swedish expertise,  
offering comfort and anti-slip performance.*

**EN ISO 20345 : 2011 SB SRC E FO**



# FIONA

## SAFETY CLOG WITH STEEL TOE CAP

- Women's model
- 340 g (weight 1 foot)
- White/gray From 34 to 42
- White/pink From 36 to 41

### TRADES RECOMMENDATIONS

Hygiene & Public Services,  
Food processing, Catering,  
Light Industry

### OUTER SOLE



Single-density PU insole.  
4 cm wedge heel.

### UPPER



Soft, breathable, water-repellent  
DynaTech® microfiber with  
antibacterial treatment.  
Pivoting and elasticated Strap.

### INSOLE

Anatomical, removable,  
antistatic and perforated

### LINING

**Hygi&Soft.**

Breathable, very soft,  
antibacterial lining.



Colors :



*A clog that combines aesthetics and safety with  
comfort thanks to a wedge-shaped sole  
adapted to the female form.*



Antistatic



Energy absorbing



Machine washable 15 min



Comfort



Non-slip



# NFORZ

## SAFETY CLOG WITH COMPOSITE TOE CAP

- Unisex model
- 340 g (weight 1 foot)
- From 36 to 47  
Fuchsia from 36 to 42

### USE

Hygiene & Public Services,  
Paramedical, Cosmetics

### OUTER SOLE

#### EXTRAGRIP®

Rubber sole. Provides perfect grip on  
all types of surfaces. Non-marking.

### UPPER

EVA E-Nordways™ ultra-light and  
perforated for black and white color  
options. Slanted side vents to prevent  
liquid penetration. Pivoting back strap.

### INSOLE

Removable sole with textile cover.



Colors :



*Lightweight Non-Slip Safety Clog. The white and  
black models are available in «perforated» versions  
for better breathability or «non-perforated»  
versions for use in wet floor environments.*



Comfort



Non-slip



**EN ISO 20345:2011 SB E SRC**



Energy absorbing



Machine washable 15 min

# BJORNSON EVO

## SAFETY CLOG WITH STEEL TOE CAP

- Unisex model
- 470 g (weight 1 foot)
- From 35 to 48

### TRADES RECOMMANDATIONS

Hygiene & Public Services,  
Food processing, Catering,  
Light Industry

### OUTER SOLE

#### EASYGRIP®

Easy Grip flexible polyurethane single-density sole. Shock-absorbing heel and non-slip tread

### UPPER

Made entirely of leather, treated with a protective High Protect polyurethane film. Comfort pad on the instep. Pivoting elastic retaining strap. Internal side perforation for enhanced breathability.

### INSOLE

Opticonfort® natural split leather on latex foam mattress for exceptional comfort and breathability. Good sweat absorption.

### LINING

Soft, breathable leather



Colors :



*Non-slip kitchen clogs with toe cap  
for optimum safety, especially appreciated  
by users in the catering industry.*



Comfort



Non-slip



Energy absorbing



Hydrocarbon



Leather

**EN ISO 20345 : 2011 SB SRC E FO**

# MADO

## SABOT SANS EMBOUT

- Unisex model
- 210 g (weight 1 foot)
- White and black **from 34 to 46**
- White/Blue - White/Grey
- White/Pink **from 35 to 41**

### TRADES RECOMMANDATIONS

Hygiene & Public Services,  
Paramedical, Medical,  
Cosmetics

### OUTER SOLE



Highly flexible single-density  
polyurethane outsole with non-slip  
tread.

EN ISO 20347: 2012 OB A E SRC

### UPPER

Leather with protective  
polyurethane film. Black instep  
comfort pad. Retaining swivel strap  
with buckle adjustment.

### INSOLE

2 mm stitched leather with arch.

### LINING

Antibacterial, antimycotic lining.



Colors :



*Mule-type supple work clog*



Comfort



Non-slip



# BORA

## WORK CLOG WITHOUT TOE CAP

- Unisex model
- 205 g (weight 1 foot)
- From 34 to 46

### TRADES RECOMMENDATIONS

Hygiene & Public Services,  
Paramedical, Medical,  
Cosmetics

### OUTER SOLE



Highly flexible single-density  
polyurethane outsole with  
non-slip tread

### UPPER

Perforated coated leather. Swivel  
strap with buckle adjustment.

### INSOLE

Leather.

### LINING

Antibacterial lining.



Colors :



*Mule-type work clog, supple and breathable.*

EN ISO 20347:2012 OB E A SRC



Antistatic



Energy absorbing



HOT PRICE



Comfort



Non-slip





# EGO

## WORK CLOG SUITABLE FOR AUTOCLAVE

- Unisex model
- 420 g (weight 1 foot)
- From 35 to 48

### TRADES RECOMMANDATIONS

Paramedical and Medical,  
Hygiene, Cosmetic & Public  
Services

### OUTER SOLE

Thermoplastic.

### UPPER

Soft one-piece thermoplastic.  
Antistatic and autoclavable at 135°C.  
Side vents.  
Swivel strap with buckle adjustment.

### INSOLE

Ergonomic tread with incorporated  
absorbent camber.



Colors :



*Work clog suitable for autoclave disinfection.*

EN ISO 20347:2012 OB E A SRC

20



Antistatic



Energy absorbing



Machine washable



autoclavable clog



Comfort



Non-slip



# NFLY

## WORK CLOG WITHOUT TOE CAP

- Unisex model
- 250 g (weight 1 foot)
- Black, white, blue **from 36 to 47**
- Light blue **from 36 to 46**
- Pink **from 36 to 42**

### TRADES RECOMMENDATIONS

Hygiene & Public Services,  
Paramedical, Cosmetics

### OUTER SOLE

#### EXTRAGRIP

Rubber sole. Provides perfect grip on all types of surfaces. Non-marking.

### UPPER

Ultralight, perforated EVA E-Nordways™. Slanted side vents to prevent liquid penetration. Pivoting back strap.

### INSOLE

Removable sole with textile cover.



**EN ISO 20347:2012 OB A SRC**



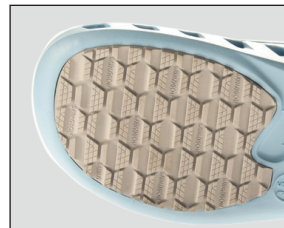
Antistatic



Energy absorbing



Machine washable 15 min



Colors :



*Ultra-lightweight non-slip work clog designed for maximum comfort.*



Comfort



Non-slip



# THE SNEAKERS



# MAËL

## WORK SNEAKER WITHOUT TOE CAP

- Unisex model
- 445 g (weight 1 foot)
- From 35 to 48

### TRADES RECOMMANDATIONS

Hygiene & Public Services,  
Food processing, Catering,  
Light Industry

### OUTER SOLE

#### EXTRAGRIP

Dual density rubber & EVA.  
Perfect grip on all types of surfaces.

### UPPER

Leather, provides flexibility and durability.

### INSOLE

Ergonomic, cushioning and removable in leather-covered PU foam.

### LINING

Perforated leather.



Colors :



*Unisex leather work sneaker. Combines comfort and style, without compromising on safety!*



Energy absorbing



Hydrocarbon



Leather



Comfort



Non-slip





# MAËL MONTANTE

## WORK SNEAKER WITHOUT TOE CAP

- Unisex model
- 470 g (weight 1 foot)
- From 35 to 48

### TRADES RECOMMANDATIONS

Hygiene & Public Services,  
Food processing, Catering,  
Light Industry

### OUTER SOLE

#### EXTRAGRIP

Dual density rubber & EVA. Perfect grip on all types of surfaces.

### UPPER

Leather, provides flexibility and durability.

### INSOLE

Ergonomic, cushioning and removable in leather-covered PU foam

### LINING

Perforated leather.



Colors :



EN ISO 20347:2012 OB FO SRC

24



Energy absorbing



Hydrocarbon



Leather

*Unisex leather, non-slip work sneaker.  
Combines comfort and fashion, without  
compromising on safety!*



Comfort



Non-slip



# PERSONNALISATION

## CUSTOMIZE SHOES TO MATCH YOUR BRAND

### LOGO BRANDING

This is a technical process that consists of placing a logo on the outside or the heel of the shoe on our iconic Maël et Maël high-top models, in black or white.



### LASER PRINTING



Each pair becomes truly unique thanks to laser printing on the supple, hard-wearing leather.



For more information:



[nordways.fr](https://nordways.fr)

# RUN LITE EVO

## WORK SNEAKER WITHOUT TOE CAP

- Unisex model
- 289 g (weight 1 foot)
- From 35 to 48

### TRADES RECOMMANDATIONS

Hygiene & Public Services,  
Catering, Healthcare,  
Hospitality & Cosmeticse

### OUTER SOLE

#### EXTRAGRIP

Double-density in rubber & EVA.  
Provides perfect grip on all types  
of surfaces. Non-marking. Anti-slip  
& anti-static. Shock absorber at the  
heel.

**EN ISO 20347:2012 OB E SRC**

### UPPER

#### 3D MESH

3D Mesh Textile, highly breathable.  
Ultra-stretch material to fit all foot  
types.

### INSOLE

Breathable mesh on latex foam  
mattress.

### LINING

Woven fabrics. Padded areas  
for maximum support.



*Unisex lightweight, breathable, non-slip  
«running-style» work sneaker.*



Comfort



Non-slip



Energy absorbing



Machine washable 15 min

# NJOY

## WORK SNEAKER WITHOUT TOE CAP

- Unisex model
- 460 g (weight 1 foot)
- From 35 to 48

### TRADES RECOMMANDATIONS

Hygiene & Public Services,  
Healthcare, Catering,  
Transport and Retail

### OUTER SOLE

#### HEXAGRIP®

Rubber with Hexagrip® profile.

**100% of the natural rubber used for the outsole comes from sustainably managed forests.**

### UPPER

Easy-to-maintain microfiber.

### INSOLE

Insole made of **80% recycled polyester from plastic waste and post-consumer clothing.**

### LINING

 **3D MESH**

Breathable mesh.



NEW

Colors :  



*With its Hexagrip® technology for exceptional grip and a sole made from recycled materials, this sneaker ensures maximum comfort on all terrains.*

EN ISO 20347:2022 OB E FO WPA SR



Energy absorbing



Hydrocarbon



Water repellent



Machine washable 15 min



Comfort



Non-slip





# AURELIA

## WORK SNEAKERS WITHOUT TOE CAP

- Women's model
- 175 g (weight 1 foot)
- From 35 to 42

### TRADES RECOMMANDATIONS

Hygiene & Public Services,  
Food processing & Catering,  
Light Industry

### OUTER SOLE

Single-density PU with  
non-slip profile.

### UPPER



Microfiber.

### INSOLE

Ergonomic, shock-absorbing  
and removable, in textile-covered  
PU foam.

### LINING

Breathable mesh.



Colors :



Women's work sneaker in washable,  
non-slip, comfortable microfiber

EN ISO 20347:2012 OB SRC

28



Energy absorbing



Machine washable 15 min



HOT PRICE



Comfort



Non-slip



# RUN CLASSIC

## SAFETY SNEAKER WITH COMPOSITE TOE CAP

- Unisex model
- 480 g (weight 1 foot)
- Black **from 36 to 47**
- White **from 38 to 47**

### TRADES RECOMMANDATIONS

Hygiene and Public Services,  
Food processing & Catering,  
Industry, Transport and Retail

### OUTER SOLE



Dual-density PU for flexibility and durability.

### UPPER



Soft, breathable, antibacterial microfiber.

### INSOLE

Removable, ergonomic dual-density PU foam, breathable and shock-absorbing.

### LINING



Breathable, antibacterial polyester.



*Unisex safety sneaker in microfiber with a dual-density sole for unprecedented strength and comfort, whatever the sector.*

**EN ISO 20345 : 2011 - S1P SRC**



Antistatic



Energy absorbing



Hydrocarbon



Machine washable 15 min



Puncture-resistant



Comfort



Non-slip



# JENNY

## SAFETY SNEAKER WITH STEEL TOE CAP

- Women's model
- 390 g (weight 1 foot)
- From 34 to 42

### TRADES RECOMMANDATIONS

Hygiene & Public Services,  
Food processing, Catering,  
Industry, Transport

### OUTER SOLE



Antistatic, non-slip single-density  
PU insole. 4cm wedge heel.

### UPPER

Water-repellent full-grain leather.

### INSOLE

Ergonomic, cushioning and  
removable EVA foam padding.

### LINING

Breathable, antibacterial  
polyester mesh.



Colors :



*Women's leather safety sneaker with wedge heel,  
adapted to the arch of a woman's foot and  
ultra-comfortable.*

EN ISO 20345:2011 S3 SRC

30



Antistatic



Energy absorbing



Hydrocarbon



Water repellent



Puncture-resistant



Comfort



Non-slip



# MANON

## SAFETY SNEAKER WITH STEEL TOE CAP

- Women's model
- 360 g (weight 1 foot)
- From 34 to 42

### TRADES RECOMMANDATIONS

Industry, Transport & Distribution

### OUTER SOLE



PU mono-density sole, antistatic and anti-slip. 4 cm wedge heel. Puncture-resistant.

### UPPER

Microfiber with a nubuck finish and inserts.

### INSOLE

Ergonomic, cushioning, and removable EVA foam insole..

### LINING

Breathable and antibacterial polyester mesh.



Colors :

EN ISO 20345:2011 S3 SRC



Antistatic



Energy absorbing



Hydrocarbon



Water repellent



Puncture-resistant



Comfort



Non-slip



*Women's safety sneakers in microfiber with a wedge heel, designed to fit the feminine arch and provide ultra-comfort.*





# DUTY SHOES



# NCLASS

## SERVICE SHOE WITHOUT TOE CAP

- Men's model
- 470 g (weight 1 foot)
- From 38 to 48

### TRADES RECOMMANDATIONS

Catering, Hospitality, Services

### OUTER SOLE

#### HEXAGRIP®

Single-density rubber sole. Non-slip thanks to Hexagrip® technology.

### UPPER

Smooth, supple leather. Derby type  
Fastening laces.

### INSOLE

Leather with micro-perforated zones  
on comfort foam.

### LINING

Mix of leather heel and textile  
forefoot.



Colors :



*Non-slip derby duty shoe for men.*

**EN ISO 20347 : 2012 OB E SRC**



Energy absorbing



Comfort



Non-slip





# NCITY

## SERVICE SHOE WITHOUT TOE CAP

- Men's model
- 440 g (weight 1 foot)
- From 38 to 48

### TRADES RECOMMANDATIONS

Catering, Hospitality, Services

### OUTER SOLE

#### HEXAGRIP®

Single-density rubber sole. Non-slip thanks to Hexagrip® technology.

### UPPER

Smooth, supple leather.

### INSOLE

Leather with micro-perforated zones on comfort foam.

### LINING

Mix of leather heel and textile forefoot.



Colors :



*Non-slip moccasin duty shoe.*



Comfort



Non-slip



EN ISO 20347 : 2012 OB E SRC



Energy absorbing

# SOLENE

## SERVICE SHOE WITHOUT TOE CAP

- Women's model
- 210 g (weight 1 foot)
- From 35 to 42

### TRADES RECOMMANDATIONS

Catering, Hotels,  
Restaurants, Services

### OUTER SOLE

#### HEXAGRIP®

Single-density rubber sole.  
Non-slip thanks to Hexagrip®  
technology.

### UPPER

Supple microfiber

### INSOLE

Microtech on comfort foam

### LINING

Microfiber.

EN ISO 20347:2012 OB SRC



Energy absorbing



Colors :



*Non-slip duty derby for women.*



Comfort



Non-slip





# SANDY SARA

## SERVICE SHOE WITHOUT TOE CAP

- Women's model
- 210 g (weight 1 foot)
- From 35 to 42

### TRADES RECOMMANDATIONS

Catering, Hotels,  
Restaurants, Services

### OUTER SOLE

#### HEXAGRIP®

Single-density rubber sole. Non-slip  
thanks to Hexagrip® technology.

### UPPER

Supple microfiber.

### INSOLE

Microtech on comfort foam.

### LINING

Microfiber.

EN ISO 20347:2012 OB SRC



Colors :

SANDY  
Heel 4 cm

SARA  
Heel 1,5 cm



*Non-slip pump shoe.*



Comfort



Non-slip



# MAXIME

## SERVICE SHOE WITH STEEL TOE CAP

- Unisex model
- 465 g (weight 1 foot)
- From 36 to 47

### TRADES RECOMMANDATIONS

Food processing & Catering,  
Food & Beverage,  
Light industry

### OUTER SOLE

Classic Sole® Injected single-density polyurethane. Antistatic and oil-resistant.

### UPPER



Ultra-resistant, supple, breathable and water-repellent microfiber with antibacterial treatment. Easy care thanks to QWS® (Quick Wash System) technology.

### INSOLE

Removable, anatomical, antistatic.

### LINING

Breathable, ultra-soft, antibacterial microfiber textile lining. Breathable felt forefoot lining.

**EN ISO 20345:2011 S1 SRC**



Antistatic



Energy absorbing



Hydrocarbon



Machine washable 15 min



Colors :



*City safety shoes, elegant and versatile,  
designed for reception, catering, production  
facilities, and construction sites.*



Comfort



Non-slip





# KITCHEN SHOES



# TONY

## SAFETY LOAFER WITH STEEL TOE CAP

- Unisex model
- 405 g (weight 1 foot)
- From 35 to 48

### TRADES RECOMMANDATIONS

Hygiene & Public Services,  
Food processing & Catering,  
Light Industry

### OUTER SOLE

**NWSHARK.**

Injected single-density  
polyurethane sole.

### UPPER

**TECHLITE.**  
LIGHT & FLEXIBLE

Water-repellent microfiber with fixed  
elastic under the tongue.

### INSOLE

In textile-covered EVA, anatomical,  
removable, antistatic and perforated.

### LINING

**Hygi&Soft.**

Breathable lining and antibacterial  
treatment.



○ ●  
Colors :



*Non-slip kitchen shoe with toe cap offering  
optimum safety, particularly appreciated by  
users in the food processing and catering industries.*

**EN ISO 20345:2011 S2 SRC**



Antistatic



Energy absorbing



Hydrocarbon



Water repellent



Machine washable 15 min



**HOT PRICE**



Comfort



Non-slip





# TED

## SAFETY LOAFER WITH COMPOSITE TOE CAP

- Unisex model
- 430 g (weight 1 foot)
- From 35 to 48  
Suitable for extra-large sizes :  
from 49 to 52

### TRADES RECOMMENDATIONS

Hygiene & Public Services,  
Food processing & Catering,  
Light Industry

### OUTER SOLE

**NWSHARK.**

Injected single-density  
polyurethane sole.

### UPPER



Soft, breathable, water-repellent  
microfiber. Easy care thanks to  
QWS® technology. Elasticated Velcro  
fastening under the tongue for foot  
support.

### INSOLE

In textile-covered EVA, anatomical,  
removable, antistatic and perforated.

### LINING

**Hygi&Soft.**

Breathable lining and antibacterial  
treatment.



Colors :

*Non-slip kitchen shoe with safety toe cap  
and velcro-adjustable tongue for optimum safety  
and easy slip-on.*

EN ISO 20345:2011 S2 SRC

40



Antistatic



Absorbent  
d'énergie



Hydrocarbon



Water repellent



Machine  
washable 15 min



Suitable for extra-large  
sizes T49-52



Comfort



Non-slip



# BRICE

## SAFETY LOAFER WITH COMPOSITE TOE CAP

- Unisex model
- 450 g (weight 1 foot)
- White, black from 35 to 48  
Blue from 35 to 47

### TRADES RECOMMANDATIONS

Hygiene & Public Services,  
Food processing & Catering,  
Light Industry

### OUTER SOLE



**MAXCONTACT**

Max Contact Sole in single-density  
PU.

### UPPER



**DYNATECH**  
BREATHABLE - FLEXIBLE

Soft, breathable, antibacterial  
microfiber. Quick Wash System  
technology. Elasticated velcro  
closure.

### INSOLE

Ergonomic, cushioning and  
removable EVA foam padding.

### LINING

**Hygi&Soft.**

Breathable lining, very soft,  
and antibacterial treated.



Colors :



*Non-slip safety kitchen shoe with safety toe cap,  
combining comfort and technical features!*



Antistatic



Energy absorbing



Hydrocarbon



Water repellent



Machine washable 15 min



Comfort



Non-slip



# BERND

## SAFETY LOAFER WITH COMPOSITE TOE CAP

- Unisex model
- 460 g (weight 1 foot)
- From 35 to 47

### TRADES RECOMMENDATIONS

Hygiene & Public Services,  
Food processing & Catering,  
Light Industry

### OUTER SOLE



Sole in single-density PU for cushioning and sturdiness. 4 mm deep anti-slip studs and extra-wide grooves for easy self-cleaning.

### UPPER



Soft, breathable, water-repellent microfiber with antibacterial treatment. Velcro-adjustable tongue.

### INSOLE

In textile-covered EVA, anatomical, removable, antistatic and perforated.

### LINING

**Hygi&Soft.**

Breathable lining with antibacterial treatment.



Colors :



*High-top safety kitchen shoe, slip-resistant, with reinforced toe cap and self-cleaning design for optimal protection and impeccable hygiene!*

EN ISO 20345:2022 S2 FO SR

42



Antistatic



Energy absorbing



Hydrocarbon



Water repellent



Machine washable 15 min



Comfort



Non-slip



# SOPHIE

## SAFETY LOAFER WITH COMPOSITE TOE CAP

- Women's model
- 370 g (weight 1 foot)
- From 34 to 42

### TRADES RECOMMANDATIONS

Hygiene & Public Services,  
Food processing, Catering,  
Light Industry

### OUTER SOLE



Antistatic, non-slip single-density  
PU sole. 4cm wedge heel adapted  
to the arch of a woman's foot.

### UPPER



Soft, breathable, water-repellent microfiber with antibacterial treatment. Velcro-adjustable tongue. Very easy to put on.

### INSOLE

Anatomical, removable, antistatic and perforated.

### LINING

**Hygi&Soft.**

Breathable, very soft, antibacterial lining.



Colors :



*Non-slip safety kitchen shoe with wedge heel,  
adapted to the arch of a woman's foot  
and ultra-comfortable.*



Antistatic



Energy absorbing



Hydrocarbon



Water repellent



Machine washable 15 min



Comfort



Non-slip





# DAN

## SAFETY LOAFER WITH COMPOSITE TOE CAP

- Unisex model
- 465 g (weight 1 foot)
- From 36 to 48

### TRADES RECOMMANDATIONS

Hygiene & Public Services,  
Food processing, Catering,  
Light Industry

### OUTER SOLE



Injected dual-density polyurethane insole for enhanced comfort and excellent abrasion resistance.

### UPPER



Ultra-resistant, supple, breathable and water-repellent microfiber with antibacterial treatment. Velcro-adjustable tongue. Very easy to put on.

### INSOLE

Removable, anatomic, antistatic and perforated.

### LINING



Breathable, antibacterial polyester.



Colors :

EN ISO 20345 : 2011 S3 SRC

*Dan is a top-of-the-range model thanks to the quality of its components.*



# BRICE PLUS

## SAFETY LOAFER WITH COMPOSITE TOE CAP

- Unisex model
- 450 g (weight 1 foot)
- From 35 to 47

### TRADES RECOMMANDATIONS

Hygiene & Public Services,  
Food processing, Catering,  
Light Industry

### OUTER SOLE



Single-density PU sole, offering  
cushioning and durability.

### UPPER



Soft, breathable, water-repellent  
microfiber with antibacterial  
treatment. Easy care thanks to QWS®  
technology. Velcro-adjustable tongue.  
Very easy to put on.

### INSOLE

Reflex® (page 51), removable insole  
designed to alleviate daily fatigue.

### LINING

Breathable, ultra-soft Mesh+®  
lining with antibacterial treatment.  
Breathable felt forefoot lining.



Colors :

*Non-slip kitchen shoe with composite toecap  
for optimum safety, the best performing and most  
comfortable shoe in its category.*

EN ISO 20345 : 2022 S2 FO SR



Antistatic



Absorbent  
d'énergie



Hydrocarbon



Water repellent



Machine  
washable 15 min



Comfort



Non-slip



# NLOCK

## SAFETY LOAFER WITH COMPOSITE TOE CAP

- Unisex model
- 500 g (weight 1 foot)
- From 35 to 48

### TRADES RECOMMANDATIONS

Hygiene & Public Services,  
Food processing & Catering,  
Light Industry

### OUTER SOLE

Injected Dual-Density PU Sole,  
Slip-Resistant (SR).

### UPPER

Recycled Mesh Lining  
Mechanical dial closure system +  
Protective Tongue for Optimal Foot  
Support.

### INSOLE

Removable PU insole  
and textile mesh.

### LINING

Breathable mesh lining,  
very soft and comfortable.  
(GRS Certified)



NEW  
COMING IN 2025



Colors :



*Kitchen shoes combining technical expertise  
and unparalleled ease of use thanks  
to the mechanical dial closure system.*







The Well  
**HERCULES**  
EUROPEAN SAFETY SHOE  
CE

# BOOTS AND ACCESSORIES



# DELTA

## BOOT WITH STEEL TOE CAP

- Unisex model
- 895 g (weight 1 foot)
- From 36 to 48

### TRADES RECOMMANDATIONS

Hygiene & Public Services,  
Food processing, Catering

### OUTER SOLE

Non-slip sole, very good flexibility.  
Low-temperature resistance down  
to -20°C.

### UPPER

Polyurethane for excellent resistance  
to animal fats, vegetable oils and  
chemical agents. Extremely light and  
comfortable.

### INSOLE

Antistatic and antifungal.

### LINING

Textile lining for protection against the  
cold.

EN ISO 20345 : 2011 S4 CI SRC

48



Antistatic



Energy absorbing



Hydrocarbon



Water repellent



Puncture-resistant



Colors :



*Lightweight, robust safety boot for use  
in the food processing industry,  
even in extreme cold conditions.*



Comfort



Non-slip



# OMEGA

## BOOT WITH STEEL TOE CAP

- Unisex model
- 1100 g (weight 1 foot)
- From 36 to 48

### TRADES RECOMMANDATIONS

Hygiene & Public Services,  
Food processing, Catering

### OUTER SOLE

Non-slip sole with good flex.  
Resistant to temperatures down  
to -10°C

### UPPER

Nitrile/PVC rubber highly resistant to  
animal fats and vegetable oils.

### INSOLE

Anatomical footbed.

### LINING

Textile lining for protection against  
the cold.

**EN ISO 20345:2011 S4 SRC**



Antistatic



Energy absorbing



Hydrocarbon



Water repellent



Puncture-resistant



Colors :

*Safety boot with steel toe cap providing  
100% protection against impacts and falling objects.  
Resistant to animal fats and vegetable oils.*



Comfort



Non-slip



# NFRESH

## WORK SOCKS

- Unisex model
- Composition :
  - 88% polyester
  - 8% polyamide
  - 3% metallic fiber
  - 1% elastane

### FIBRE

#### COOLMAX®

Coolmax polyester fiber, improves evacuation of foot perspiration. Heel, toe and malleolar reinforcements.

EN ISO TESTED STANDARD 20344 : 2011 § 5.10

### TRADES RECOMMANDATIONS

Hygiene & Public Services,  
Food processing & Catering

#### Une couleur, une pointure

36/38: pink trim

39/41: red trim

42/44: blue trim

45/47: green trim

48/50: orange trim



Colors :

*Short, durable and breathable work sock*

50



Antistatic



Machine washable



Comfort



# REFLEX

## ANTI-FATIGUE INSOLE

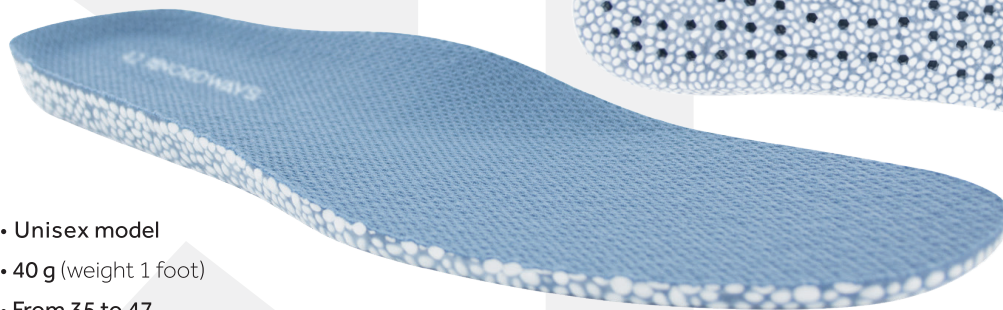
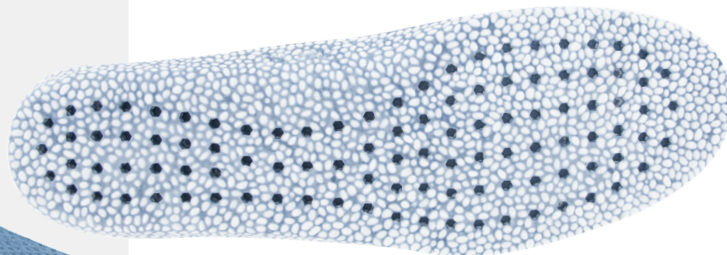
- Unisex model
- 40 g (weight 1 foot)
- From 35 to 47

### TRADES RECOMMANDATIONS

All industries and sectors

The Reflex insole has been designed to alleviate daily fatigue. Tested over several months, the difference in comfort is immediate. Cushioning and dynamic rebound combine to deliver a comfort to the upper body.

The tone generated by these insoles is perceptible right from the start and also remains present and active during static postures. static postures.



*Reflex , an extra-supple, breathable insole  
that provides both cushioning and rebound.*



Comfort





## CLOGS



**{ Silvo } P.13**

With composite toe cap



**{ Thor } P.14**

With composite toe cap



**{ Fiona } P.15**

With composite toe cap



**{ Nforz } P.16**

Without toe cap



**{ Bjornson evo } P.17**

Without toe cap



**{ Mado } P.18**

Without toe cap



**{ Bora } P.19**

Without toe cap



**{ Ego } P.20**

Without toe cap



**{ Nfly } P.21**

Without toe cap

## WORK SNEAKERS



**{ Mael } P.23**

Without toe cap



**{ Mael montante } P.24**

Without toe cap



**{ Run lite evo } P.26**

Without toe cap



**{ Njoy } P.27**

Without toe cap



**{ Aurelia } P.28**

Without toe cap



**{ Run Classic } P.29**

With composite toe cap



**{ Jenny } P.30**

With steel toe cap



**{ Manon } P.31**

With steel toe cap

NEW

## DUTY SHOES



**{ Nclass } P.33**

Without toe cap



**{ Ncity } P.34**

Without toe cap



**{ Solene } P.35**

Without toe cap



**{ Sara } P.36**

Without toe cap



**{ Sandy } P.36**

Without toe cap



**{ Maxime } P.37**

With composite toe cap

## KITCHEN SHOES



**{ Tony } P.39**

With steel toe cap



**{ Ted } P.40**

With composite toe cap



**{ Brice } P.41**

With composite toe cap



**{ Bernd } P.42**

With composite toe cap



**{ Sophie } P.43**

With composite toe cap



**{ Dan } P.44**

With composite toe cap



**{ Brice plus } P.45**

With composite toe cap



**{ Nlock } P.46**

With composite toe cap

NEW

## BOOTS AND ACCESSORIES



**{ Delta } P.48**

With composite toe cap



**{ Omega } P.49**

With composite toe cap



**{ Nfresh } P.50**

Sock



**{ Reflex } P.51**

Insole

## SIZE GUIDE

### HOW TO CHOOSE YOUR SIZE



EU	UK	US MEN	US WOMEN
34	2		4.5
35	2.5		5
36	3.5		5.5
37	4		6
38	5		7
39	6		8
40	6.5	7	8.5
41	7	8	9.5
42	7.5	8.5	10
43	8.5	9.5	11
44	9	10	
45	10	11	
46	11	12	
47	11.5	12.5	
48	12.5	13.5	
49	14	14.5	
50	15	15.5	
51	16	16.5	
52	17	17.5	

# MAINTENANCE

## SHOE RENOVATOR

Nourishes and effectively protects shoe leather.

Its foam applicator makes it easy to apply.

Perfect for sneaker care! The white renovator restores a bright, refreshed white thanks to its highly pigmented formula.



# STANDARDS

## Legislation

The shoes featured in the Nordways® catalog are Personal Protective Equipment (PPE), designed to protect the wearer from health and safety risks. All Nordways® shoes are «tested» and CE certified, ensuring they meet the criteria of the European Directive in terms of:

• **Ergonomics** • **Safety** • **Comfort** • **Durability**

They have undergone the CE type certification process by a notified body. Nordways® shoes are designed and manufactured in accordance with the anticipated risks and comply with the following European harmonized standards.

### WORK SHOE - EN ISO 20347 STANDARDS

Nordways work shoes comply with the ISO 20347 standard. This specification applies to work shoes for professional TRADES RECOMMENDATIONS and does not require protection against impact or crushing hazards.

### SAFETY SHOE - EN ISO 20345 STANDARDS

Nordways safety shoes comply with the EN ISO 20345 standard. This specification applies to safety footwear featuring a non-slip sole and a 200 joule toecap.

## SRC STANDARD

An additional safety standard consisting of two requirements:

**SRA** - Slip resistance tested on a ceramic floor with the addition of sodium lauryl sulfate (NaLS), which simulates detergent or hoTRADES RECOMMENDATIONS product.

**SRB** - Slip resistance tested on a steel floor with the addition of glycerine, which simulates oil.

## Safety levels

**OB**

Minimum requirements: abrasion, tear and slip resistance + water vapor permeability

**O1**

OB + closed back + shock absorption + antistatic properties

**O2**

O1 + water-repellent upper

## **SB BASIC PROTECTION**

### **EN ISO 20345: 2011**

- SB rear open or closed
- + antistatic properties
- + energy absorption in the heel
- + hydrocarbon-resistant sole

## **S1 REGULATORY PROTECTION**

### **EN ISO 20345: 2011**

- S1 closed rear
- + antistatic properties
- + energy absorption in the heel
- + hydrocarbon-resistant sole

## **S1P EN ISO 20345: 2011**

- S1P closed rear
- + antistatic properties
- + heel energy absorption
- + hydrocarbon-resistant sole
- + anti-puncture sole

## **S2 INTERMEDIATE PROTECTION**

### **EN ISO 20345: 2011**

- S2 closed rear
- + antistatic properties
- + heel energy absorption
- + hydrocarbon-resistant sole
- + water-repellent upper

## **S3 ENHANCED PROTECTION**

### **EN ISO 20345: 2011**

- S3 closed rear
- + antistatic properties
- + heel energy absorption
- + hydrocarbon-resistant sole
- + anti-puncture sole
- + water-repellent upper

## **S4S4 EN ISO 20345: 2011**

- S4 rear closed
- + antistatic properties
- + energy absorption in the heel
- + hydrocarbon-resistant sole
- + water-repellent upper
- + waterproof

## **S5 ENHANCED PROTECTION**

### **EN ISO 20345: 2011**

- S5 closed rear
- + antistatic properties
- + energy absorption in the heel
- + hydrocarbon-resistant sole
- + anti-puncture sole
- + water-repellent upper
- + waterproof

- P** Anti-puncture sole
- A** Antistatic
- E** Energy absorption in the heel
- WR** Water-resistant shoe
- M** Metatarsal Protection
- AN** Ankle Protection
- FO** Hydrocarbon-resistant sole

## **REQUIREMENTS SET BY STANDARDS**

### **SRA**

**Test Surface: Ceramic**

**Lubricant: Water and detergent**

≥0.32 flat shoes

≥0.28 shoes inclined at 7° toward the heel

### **SRB**

**Test Surface: Steel**

**Lubricant: Glycerin**

≥0.18 flat shoes

≥0.13 shoes inclined at 7° toward the heel

**SRC** SRA + SRB



Find the 2022 markings



# TECHNOLOGY

## PROVIDING SAFETY AND PEACE OF MIND IN YOUR DAILY WORK

Slips, trips, and falls account for 17% of workplace accidents that result in time off, making them the second leading caTRADES RECOMMANDATIONS of injury, with approximately 10% due to slipping. This percentage is even higher in certain sectors, such as catering, where it reaches 31%.

### Anti-Slip TECHNOLOGY



EASYGRIP = market standard

EXTRAGRIP® et HEXAGRIP®  
= technologies developed by Nordways®

### Les + de la technologie anti-glisse by Nordways®

EXTRAGRIP® and HEXAGRIP® are soles developed by Nordways®. The thickness and flexibility of the sole ensure walking comfort, while the design provides slip resistance.

### EASYGRIP®

EasyGrip is a rubber sole that offers excellent grip and support on any surface. TRADES RECOMMANDATIONSd on our EVA clogs for many years, Easy Grip ensures safety and peace of mind in your day-to-day work.

### HEXAGRIP®

The result of many years of research in the Nordways laboratories, HEXAGRIP® is the most widely TRADES RECOMMANDATIONSd grip pad in the Nordways range. Its hexagonal technology creates a non-slip surface on all types of terrain.

### EXTRAGRIP®

A combination of geometric grip pads strategically positioned to keep the sole clean. Versatile enough to offer excellent support, even on the slipperiest surfaces.

## Insole technologies



The 2D Flexon® insole is made of dual density PU: a very soft middle layer for excellent shock absorption, while the denser outer layer provides increased durability for longer life. An X-shaped, anti-twist finish ensures stability and optimal grip. The energy-absorbing heel is a great benefit for those who spend long hours standing.



Developed specifically for women, the N2W® insole is made of anti-static, non-slip single-density PU. Featuring a 4 cm wedge heel with energy absorber, it offers perfect support of women's arches.



The NW RUN® sole is made of dual-density PU: A soft top layer for enhanced comfort and cushioning, and a denser bottom layer for better abrasion resistance. Its parabolic shape provides greater grip on the ground. The energy-absorbing heel is an ideal for those who work while standing.



Non-slip sole thanks to its finish and 4mm deep studs. Optimized cushioning due to the single-density PU composition, making it flexible and comfortable. Self-cleaning with extra-wide grooves that open outwards to allow liquids and materials to drain easily.



Single-density PU outsole designed for cushioning and durability. Offers superior grip with an optimized non-slip surface. Antistatic, hydrocarbon-resistant.



Made of single-density PU, this sole ensures excellent cushioning. Its SRC-certified anti-slip tread provides reliable grip. The energy absorber in the heel adds even more comfort.



## Fiber technologies

### COOLMAX®

Coolmax® technology allows you to enjoy freshness and comfort in all conditions. This fabric absorbs up to 13 times more moisture than cotton or nylon, quickly evacuating moisture to keep you cool and dry. Additionally, it is ultra-light and dries quickly.

### FULLTECH®

STRONG | BREATHABLE | FLEXIBLE

Fulltech® is the most advanced microfiber available! Water-repellent, ultra-resistant, super-soft and breathable, it ensures your safety and comfort. Washable at 30°C, it's easy to care for thanks to QWS® technology.

### DYNATECH®

BREATHABLE | FLEXIBLE

Dynatech® is a microfiber with a range of mechanical qualities. It is water-repellent, supple, durable and breathable, essential for ensuring comfort and foot well-being. Washable at 30°C, it's easy to care for thanks to QWS® technology.

### TECHLITE®

LIGHT | FLEXIBLE

A microfiber combining suppleness and lightness. Water-repellent and breathable, Techlite® ensures foot comfort and well-being. Washable at 30°C, it is easy to care for thanks to QWS® technology.

## Lining

### 3DMESH.

3DMESH (add actual logo)

Designed to meet the needs of men and women working in industrial environments. Highly breathable and antibacterial, this material guarantees optimal hygiene.

### Hygi&Soft.

Breathable and antibacterial, this lining helps maintain hygiene inside the shoe. Its soft texture provides added well-being and comfort.



# NOTES





Your Nordways distributor



166 Avenue des Auréats - 26000 Valence - France

+ (33) 4 75 61 76 09 - [contact@nordways.fr](mailto:contact@nordways.fr)

Find our entire collection on



[www.nordways.fr/en](http://www.nordways.fr/en)



[/nordways.shoes/](https://www.instagram.com/nordways.shoes/)



[/company/nord'ways/](https://www.linkedin.com/company/nord'ways/)



[/Nordwayschaussure/](https://www.facebook.com/Nordwayschaussure/)