

seven

living



emotional design

emotions

in glass



history

Borosilicate glass blown in Umbria. **Blueside** was born from Steroglass®, a 60-year worldwide leading company in glass blowing and high-tech scientific labware instrumentation. Founded and inspired by Luigi Falocci, the family-run Steroglass® has always seen a continuing favourable trend since scientific knowledge and design have been meticulously mixed resulting in high quality instruments and iconic objects of style.

Blueside boasts the unique skilled hands of Steroglass's craftsmen, able to finely process and blow glass into unparalleled design pieces, creating emotional spaces to live in. It's about love for **design**, passion for **food**, **drink** and **music**. It's about a strong desire for wellness and all that makes you feel good.



Pure raw material - Borosilicate Glass

Today, glass blowing is an increasingly rare art that demands fatigue, patience and precision.

Borosilicate glass shaping requires acknowledged expertise. A **Blueside** object is thoroughly hand-made in borosilicate glass - the purest, most neutral, most resistant to thermal shocks, and contaminants-free.

Its uniqueness makes it different from all the others!

Blueside Emotional Design: an experience you were not expecting!

borosilicate glass







Blueside is

preciousness, purity,
transparency, beauty,
harmony, essentiality, style,
emotion, multipurpose,
uniqueness, multisensory,
atmosphere, meditation,
relaxation, passion, slow life,
conviviality, roots...



A collection of decor luxury glass complements for all living spaces includes vases, candle holders, flowers, diffusers, home fragrances and many more.

A touch of glass design will embellish your favourite corner!

living





Eska

fatal attraction

Eska is both a flower vase and a candle holder in mouth-blown glass with an unusual structure: its perfect silhouette recalls a bait, arising anyone's curiosity.

design *Simone Micheli*

♪ Bill Evans trio
My foolish heart

dimensions *øxh 100x225mm*

material *borosilicate glass*

*Comes with a candleholder
accessory in borosilicate glass,
for tall or round candles.*









Vento

a caress of glass

This beautiful cone-shaped glass vase symbolizes the sand in the sea that settles to the bottom, leaving the water above clear and purified. Vento is like calm water after a sea storm.

Its alchemical shape also reminds us of the solid/liquid or oil and water separators used in chemical experiments in the past.

design *Simone Micheli*

♪ Pino Daniele
Vento di passione

dimensions *øxh 100x250mm*

material *borosilicate glass*

Pablo

naked geometries

A desire that drives us towards our next sailing trip to Spanish coast...

Pablo is a particularly expressive blown glass vase, highly refined and with an evocative design.

A tribute to the great Pablo Picasso, master of cubism. Its essential lines take inspiration from nature, always perfect and unpredictable.

Pablo with its water glass is also a jug, contributing to environmental sustainability.

design *Simone Micheli*

♪ Francesco De Gregori
Pablo

dimensions *oxh 80x255mm*

material *borosilicate glass*





Bolina

prosperous abundance

Bolina is the bowline, a secure knot used by sailors that supports the moorings before heading towards the next landing place.

An appealing vase with a highly original belly and an encompassing, satisfying shape.

Made in borosilicate glass, Bolina is available in two sizes. An emotional flower vase holding memories that will finely decorate your home.

design *Simone Micheli*

♪ Joe Cocker
You are so beautiful

dimensions *Large* øxh 200x400mm
Small øxh 100x200mm

material *borosilicate glass*





Nassa

maze in glass

Its shape recalls fish traps - fishing tools that have always been used by seamen. The original style makes this flower vase one of a kind.

Nassa alone can add a touch of beauty to your living room.

design *Simone Micheli*

♪ Ray Charles
A song for you

dimensions *øxh 100x300mm*

material *borosilicate glass*









Natalia

staying afloat

Natalia takes inspiration from natelli - coloured floats strung with rope in fishing nets that are cast into the sea.

The friendly floating rings that colour the small harbours along Italian coast are now completely symmetrical and are perfect for holding a flower or a candle to create the right atmosphere for a seaside dinner. A glass dream through the nets, the boats moored at the pier and the natelli hanging on the walls of the houses.

The incredibly versatile Natalia can also be used as an unusual decanter to oxygenate and serve fine wines.

design *Simone Micheli*

♪ Django Reinhardt
I'll see you in my dreams

dimensions *øxh 100x300mm*

material *borosilicate glass*





Metaverso

refinement and fluidity

Refinement, mastery, fluidity are the three concepts that come to mind when looking at Metaverso vases. The name embraces a conceptual universe that exactly reflects the sophisticated soul of these essential-looking vases. The concept behind the design takes up the very high values of the Italian tradition of blown glass and projects them with elegant versatility into a dynamic dimension. The elegance of simplicity is perfectly embodied in Metaverso's modular versions, making it a contemporary statement.

design *Nicola Gallizia*

♪ Radiohead
Creep

name *Metaverso High*

dimensions *inner vase o x h 140x320mm*
outer vase o x h 270x87mm

name *Metaverso Low*

dimensions *inner vase o x h 190x260mm*
outer vase o x h 270x89mm

material *borosilicate glass*









Peacock

from caterpillar to butterfly

These beautiful blown glass vases recall the perfection of the wavy shapes of a caterpillar turning into a “Peacock’s eye” butterfly.

Peacock vase is ideal for welcoming a bouquet of colourful flowers that resemble a peacock tail with its breathtaking colours.

Peacock is also a cachepot vase to house your ornamental plants in an elegant and original way.

design *Francesca Dini
Eleonora Pastorelli
Nicoleta Rusu*

*under the teaching of Simone Micheli
Architectural Hero*

♪ Duke Ellington & John Coltrane
In a sentimental mood

dimensions *vase* *øxh 234x370mm*
cachepot øxh 123x190mm

material *borosilicate glass*



Tears *flowered drops*

Tears is a very original flower-pot, a glass bell with a hole at its peak where you can place a true “tear” of glass. Inside dry or fresh flowers. Thanks to Tears’s sinuous shape, the glass tear seems to float giving strong emotions to flower lovers.

design *Ivo Caruso*
Alessandro D’Angeli
Chiara Pacifici

♪ *Ivano Fossati*
Unica rosa

dimensions *Big* øxh 150x400mm
Small øxh 150x250mm

material *borosilicate glass*



Submarine *immersed but visible*

Flower vase made of hand-blown borosilicate glass, a tube almost completely closed. Flowers are individually inserted into slots on top until they reach small glass bubbles on the bottom, allowing the stems a vertical position.

It is particularly suitable for dried flowers, but of course it can be used with freshly cut flowers simply by pouring water from a hole placed on the lateral side of the vase that looks like a “porthole” from which “Submarine” originates.
Available in 2 sizes.

design *Geraldine Dardano*

♪ Radiohead
No surprise

dimensions *Big* øxh 90x440mm
Medium øxh 120x290mm

material *borosilicate glass*



Topless *natural transparency*

Hand-made flowerpot of borosilicate hand-blown glass takes the shape of “Tazzezen” collection.

Its dimensions are ideal for holding small plants (e.g. cactus). The transparency effect and suspension of the jacketed glass give a remarkable lightness effect.

The natural element is emphasized thanks to the glass transparency. Comes in three sizes, 2 small and 1 tall (about 1 metre high. The latter further amplifies suspension and lightweight effects).

design *Francesco Piretti*

♪ Giorgio Gaber
Non arrossire

dimensions *Big* øxh 140x720mm
Medium øxh 140x260mm
Small øxh 140x160mm

material *borosilicate glass*



Tubular *bamboo nodes*

Tubes of borosilicate glass with glass nodes stylized to resemble bamboo. Their reversibility makes them perfect for holding a flower, a candle, dried flowers, fresh flower petals, colored liquids, or anything else you care to imagine.

Available in three-piece sets or singly in large, medium and small sizes, Tubular is a fanciful vase that stimulates creativity, bringing to life situations with a “certain ambience”...

design *Francesco Piretti*

♪ Keith Jarrett Trio
To young to go steady

dimensions *Large* o x h 95x680mm
Medium o x h 95x580mm
Small o x h 95x480mm

material *borosilicate glass*





Benia

beyond imagination

Minimal flower vase for
floreale bulbs with aquatic
roots and hydroponic
indoor plants.

design *Luca Binaglia*

♪ Bob James
Feel like making love

dimensions *øxh 130x450mm*

material *borosilicate glass*



FioridiVetro

naturally timeless

Design flowers with minimal shapes made of borosilicate glass. Inspired by botanical creatures that manifest themselves in a perfect ethnic style.

design *R&D Blueside*

♪ Fausto Mesolella
Tulipani

dimensions	<i>Bean</i>	<i>øxh 33x570mm</i>
	<i>Calla</i>	<i>øxh 55x450mm down</i>
		<i>øxh 52x500mm up</i>
	<i>Calice</i>	<i>øxh 60x490mm</i>
	<i>Trasimeno</i>	<i>øxh 30x540mm</i>
	<i>Ricciolo</i>	<i>øxh 40x520mm</i>
	<i>Silk</i>	<i>øxh 90x470mm</i>
	<i>Elfo</i>	<i>øxh 80x530mm</i>
	<i>Soffio</i>	<i>øxh 50x550mm</i>
	<i>Bamboo</i>	<i>øxh 10x450mm small</i>
		<i>øxh 16x500mm large</i>
	<i>Mughetto</i>	<i>øxh 80x450mm</i>
	<i>Cipolla</i>	<i>øxh 55x570mm</i>
	<i>Campanella</i>	<i>øxh 40x520mm</i>

material *borosilicate glass*





I cinini *personal garden*

Tiny reversible flower
vases made of hand-blown
borosilicate glass.

Come with three coloured soft
lichens, and one or more small
flowers can also fit when you
turn them upside down. An
original gift for a green cuddle!
Two versions: transparent and
frosted glass

design *Sara Guasticchi*

♪ Glen Miller
The nearness of you

dimensions *øxh 69x27mm*

material *transparent and frosted
borosilicate glass*

**Available with a set of 3 stabilized
lichens (red, pink and green)*





Cino *width, not height*

Cino is a borosilicate glass vase suitable for small compositions of short stem flowers.

Its central hole allows for even field flowers arrangements, which are not always easy in ordinary vase shapes. Being low and flat makes it also a “delicate” floral centerpiece.

Unique for its reversibility - in the absence of water and fresh flowers just turn Cino upside down and it will hold green stabilized lichens, a really unexpected touch of green.

design *Sara Guasticchi*

♪ Stefano Bollani trio
Beccuccia di rosa

dimensions *øxh 150x68mm*

material *borosilicate glass*



I Vasetti

*a lovely touch
of green*

Small flowers in blossom in these small glass vase are like coloured butterflies spreading their wings from the sinuous caterpillar shape.

Pretty on every corner of your home or office given its small size, it will make your room an original and smart place.

design *R&D Blueside*

♪ Beegie Adair
Solitude

dimensions *øxh 52x200mm*

material *borosilicate glass*



Lampara *sea light, evening light*

Who among us was not fascinated by the light of the lampare - the fishing lights fishermen used to light up the sea at night to attract fish before casting their nets?

Lampara is an oil lamp with a minimal design that takes us back to the oil lamps of ancient Greece, offering us an evocative plunge into the past. Made of borosilicate glass, when Lampara is filled with olive oil, a capillary action soaks the wick and lights the lamp.

design *Simone Micheli*

dimensions *oxh 120x30mm*

material *borosilicate glass*

♪ Pat Metheny
Travels









Glenda *the perfect candlelight*

Glenda is a wonderful borosilicate glass outdoor lantern that celebrates a special candlelight dinner. An elegant design object meant to stay for emotional dinner lovers searching minimalism any time.

design *Luca Binaglia*

♪ Charlie Haden
Pat Metheny
Spiritual

dimensions *Tall* *oxh 160x280mm*
Ball *oxh 190x190mm*

material *borosilicate glass*

Lie *Aladdin's pot*

Small pot-shaped candle holder. The finest way to brighten your table during a cosy evening.

design *R&D Blueside*

dimensions *øxh 44x25mm*
l handle 33mm

♪ Hoagy Carmichael
Stardust

materiale *borosilicate glass*





Notte *warm light*

Handmade candle holders in borosilicate glass.

The transparency and different heights of the candles give softness and dynamism to these candle holders, which are set in an unusual time dimension, balanced between modern design and the tradition of the candle. It is an object for meditation that produces an altar of lights for contemplating and for being contemplated.

Thanks to its integrated adaptable holder, you can use both taper candles and low, wide candles.

design *Francesco Paretti*

♪ Doctor 3 Rea/Pietropaoli/Sferra
Song 1 *Danny boy/ by by blackbird*
(Ray Handerson)
Song 2 *Wou to thee my country*
With or without you (U2)
Washing of the water (Peter Gabriel)

dimensions *lpxh 260x260x140mm*

material *borosilicate glass*



Barlume

a candle holder of a time long gone

Hand-blown design candle holder in borosilicate glass. A fine minimal object that calls to mind old individual candle holders. The best way to have an elegant mise en place by lighting your table with atmosphere!

design *R&D Blueside*

♪ Beegie Adair
Come fly with me

dimensions *oxh 122x141mm*

material *borosilicate glass*





Odori *home fragrances*

design *R&D Blueside*

capacity *I Naturali* 100ml
Gli Astratti 500ml





I NATURALI

Home fragrances,
100% natural and
essential-oil based.
The essential oil is
the soul of the plant.
Once its perfume has
reached your nostrils,
give it five seconds to
act... you will sense
a feeling of well-
being, which means
you have grasped its
essence!



GLI ASTRATTI

nose *Silvia Babucci*

A unique line of artistic home
fragrances designed by expert
“Noses” from the Blueside
R&D team, and formulated by
prestigious perfume makers
from Grasse, in France. Designed
to give your sense of smell and
memory some unforgettable tips!
Their pleasantness and
persistence make them
particularly suitable for air
fresheners with rattan sticks.



Desiderio

make your dream true

Spherical spray diffuser with vertical or coil glass dip tube reinterpreting the stunning 1920s.

An interactive “spur-of-the-moment” spray scents the air. Three versions: 100ml, 1 Lt, 3Lt.

Fragrance not included.

design *Francesco Paretti*

♪ Fabrizio Mocata
Cruzando Aguas

dimensions 3 lt *øxh 90x253mm*
1 lt *øxh 131x180mm*
100 ml *øxh 30x101mm*

material *borosilicate glass*





BLUESIDE



Mina *scent explosion*

Fabulous diffuser. This sphere of borosilicate glass with various openings recalls a bombshell. The plugs are closed with cork stoppers and are used both to pour the fragrance into the sphere and to scent the air by simply opening them. Mina is available in two sizes, depending on room size. Of course, Mina can serve other purposes like many Blueside products. We suggest using it as a flowerpot for dry and fresh flowers.

Fragrance not included.

design *Ivo Caruso*
Alessandro D'Angeli
Chiara Pacifici

♪ Dream Theatre
The spirit carries on

dimensions *Mina Lounge* ø190mm
Mina Room ø170mm

material *borosilicate glass*

Ufo

the volatile perfumer

Unidentified Flying Object.
A cute borosilicate glass diffuser that fills the air with scented notes.
A cool space-recalling design, Ufo is like a flying object scenting the air with unforgettable fragrances.

Fragrance not included.

design *Daniele Buschi*

♪ The Bond
The weight

dimensions *ø 71mm*

material *borosilicate glass*





Greta *boundless*

A new design for this chic glass blown diffuser.

Greta represents one of the milestones in the process of turning conventional items into alluring design deco objets.

It is pleasing to the eye and to the smell: a truly sensorial experience!

Fragrance not included.

design *Francesco Piretti*

♪ David Gilmour
5 a.m.

dimensions *øxh 150x68mm*

material *borosilicate glass*





Carapace *spread slowly*

Hand-blown diffuser in borosilicate glass. Its big size allows scenting large areas such as hotel lounges, wellness centres and any rooms requiring delicate and intense lasting fragrances.

Inside a hanging chamber creates stunning transparent and chromatic effects making Carapace a fabulous object capable of catching everyone's eye.

Fragrance not included.

design *R&D Blueside*

♪ Bill Evans
Nardis

dimensioni *b x h 250x407mm*
capacity 5 litri

material *borosilicate glass*







Radius

extra aroma

Flavours, lines and colours,
how much space available
between the top floor and the
ground of this fabulous cross-
ray diffuser!
Fragrance not included.

design *Francesco Piretti*

♪ Dinah Washington
Red sails in the sunset

dimensions *øxh 130x160mm*

material *borosilicate glass*



Stone zen perfumer

Original diffuser made of blown borosilicate glass. Its relaxing shape calls to mind the river stones smoothed by time and slowly flowing water. Fragrance not included.

design *R&D Blueside*

♪ Dario Deidda
Mutual

dimensions \varnothing xh 116x59mm

material *borosilicate glass*



Kronos and Cleo *gone with time*

Wonderful designer hourglass to tastefully mark the time that is ticking by. An ever-green idea for a present for lovers of furnishings and collecting.

The hourglasses are equipped with a silver cap that allows you to adjust the time to your liking.

design *R&D Blueside*

♪ Prince
Purple rain

dimensions *Kronos* øxh 160x235 mm

Cleo øxh 125x155 mm

material *borosilicate glass*



Levante *leaning in the wind*

A leaning reinterpretation of the old tavern flask. Levante is slender and ready to bow to top-level contemporary design.

One of the most multifunctional and creative objects in the Blueside collection, also beautiful as a deco object.

design *Nicola Pantanetti*

♪ Joao Gilberto
A felicidade

dimensions *øxh 150x383mm*

material *borosilicate glass*

emotional

design

Blue...

Blueside is about the “blue” side of life.

Blue is classic, noble and modern at the same time.

Blue recalls the depth of the sea, the immensity of the sky, and other magnificent blue elements of nature.

Blue evokes deep feelings for meditation making us feel calm and safe. In a blue-painted room our heart beats slowly.

For the Chinese and the ancient Egyptians blue was the colour of immortality.

*Blue gives birth to the **Blues musical** style - the origin of **jazz, rock,** and all contemporary music - which expresses African Americans’ nostalgia, full of pathos and rhythm.*

The Blueside collection offers deep emotions that leave their mark forever.





index

16



Eski
fatal attraction

18



Vento
a caress of glass

20



Pablo
naked geometries

22



Bolina
prosperous abundance

24



Nassa
maze in glass

26



Natalia
staying afloat

28



Metaverso
refinement and fluidity

32



Peacock
from caterpillar to butterfly

34



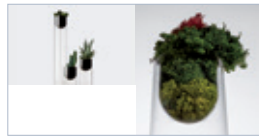
Tears
flowered drops

35



Submarine
immersed but visible

36



Topless
natural transparency

38



Tubular
bamboo nodes

40



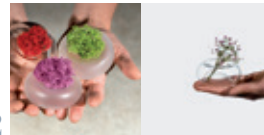
Benia
beyond imagination

41



FioridiVetro
naturally timeless

42



I cinini
personal garden

44



Cino
width, not height

45



I Vasetti
a lovely touch of green

46



Lampara
sea light, evening light



48

Glenda
the perfect candlelight



50

Lie
Aladdin's pot



51

Notte
warm light



52

Barlume
a candle holder of a time long gone



54

Odori
home fragrances



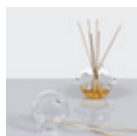
56

Desiderio
make your dream true



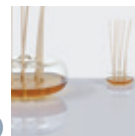
58

Mina
scent explosion



59

Ufo
the volatile perfumer



60

Greta
boundless



61

Carapace
spread slowly



64

Radius
extra aroma



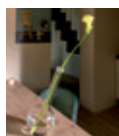
65

Stone
zen perfumer



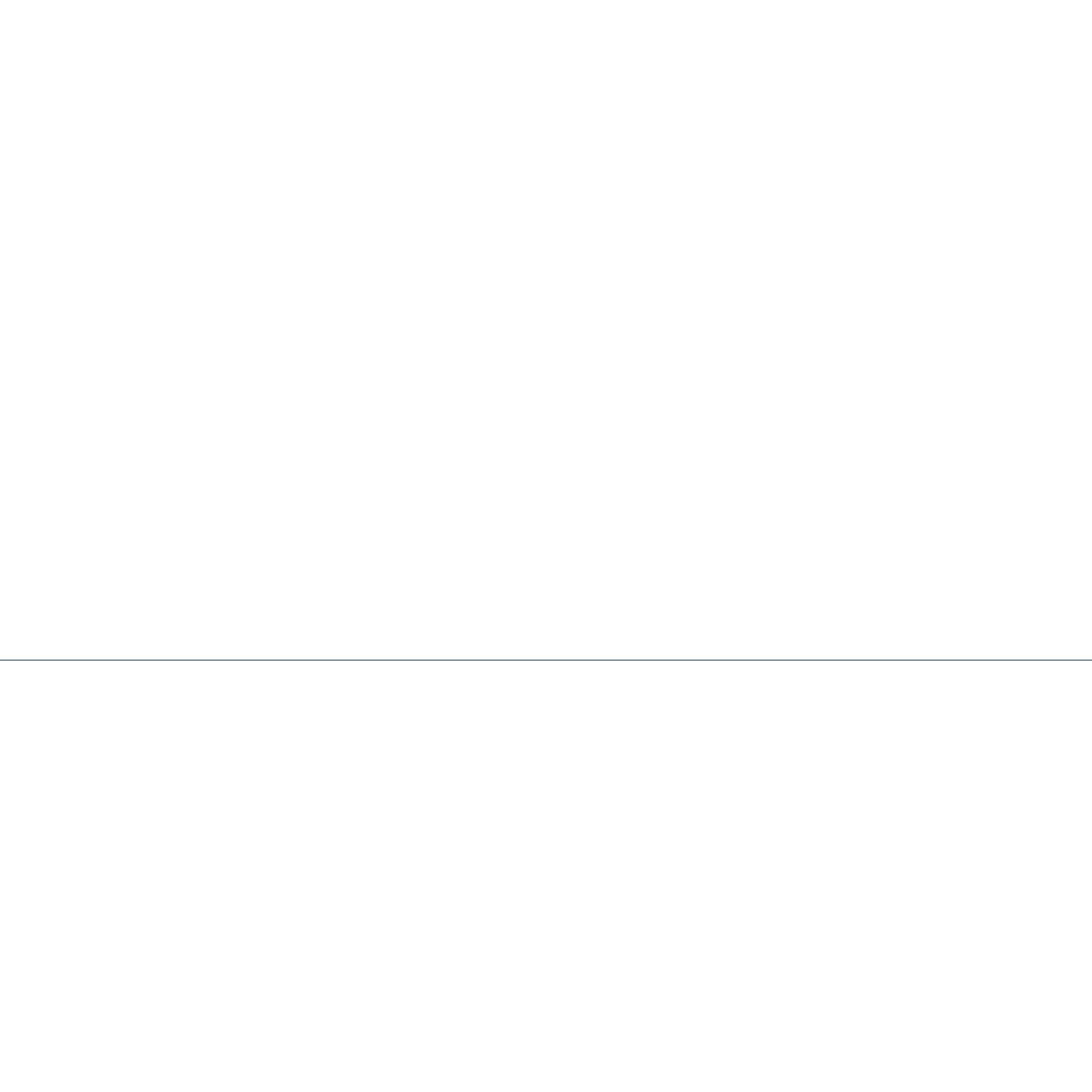
66

Kronos and Cleo
gone with time



67

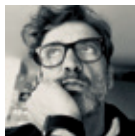
Levante
leaning in the wind



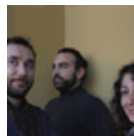
designers



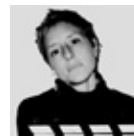
Luca Binaglia



Daniele Buschi



*Ivo Caruso
Alessandro D'Angeli
Chiara Pacifici*



Géraldine Dardano



Nicola Gallizia



Sara Guasticchi



Simone Micheli



Nicola Pantanelli



Francesco Paretti



R&D Blueside

emotional

Steroglass® srl is the owner of all products, photographs and texts in this catalogue.

All rights reserved Steroglass® srl, no part of this catalogue even partial may be reproduced, stored in a retrieval system, or transmitted in any form or by any means.

Steroglass® srl, the owner of the Blueside trademark, has all rights to add any changes to this catalogue without prior notice.

design

credits

art direction Edoardo Tintori

photo Edoardo Tintori photostudio, Roberto Vaccai

photo setting Lisa Falocci, Montecorneo570 - La casa

graphic design Eraldo Marini

print Tipolito Properzio

historical research Rosella Calzoni

acknowledgements... to Stefano Falocci for strongly believing in the Blueside project and all those who have closely supported this group of dreamers to create the whole Blueside collection.



STEROGLASS s.r.l.
Via Romano di Sopra, 2/C
06132 S. Martino in Campo
Perugia - Italia
tel +39 075 60 90 958
fax +39 075 60 90 934
info@blueside-design.com
www.blueside-design.com

PERUGIA *showroom*
via Oberdan, 41

MILANO
via S. Cecilia, 6

BLUESIDE Emotional Design



blueside_emotional_design



COMPANY WITH
QUALITY SYSTEM
CERTIFIED BY DNV
ISO 9001

STEROGLASS® is the owner of the BLUESIDE® trademark